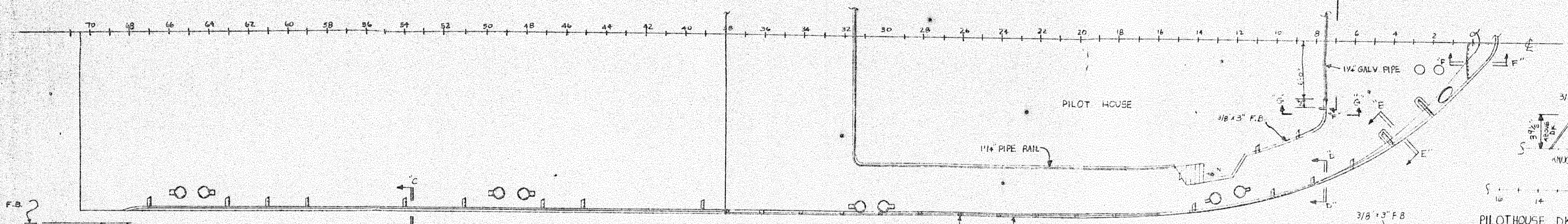
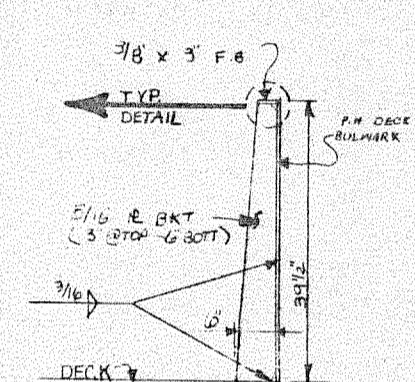
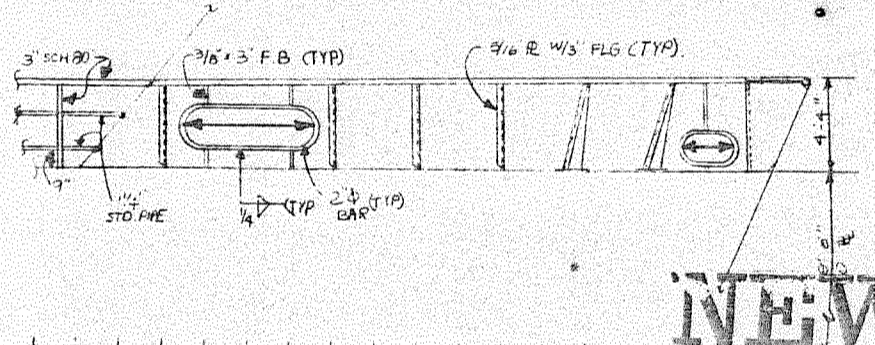
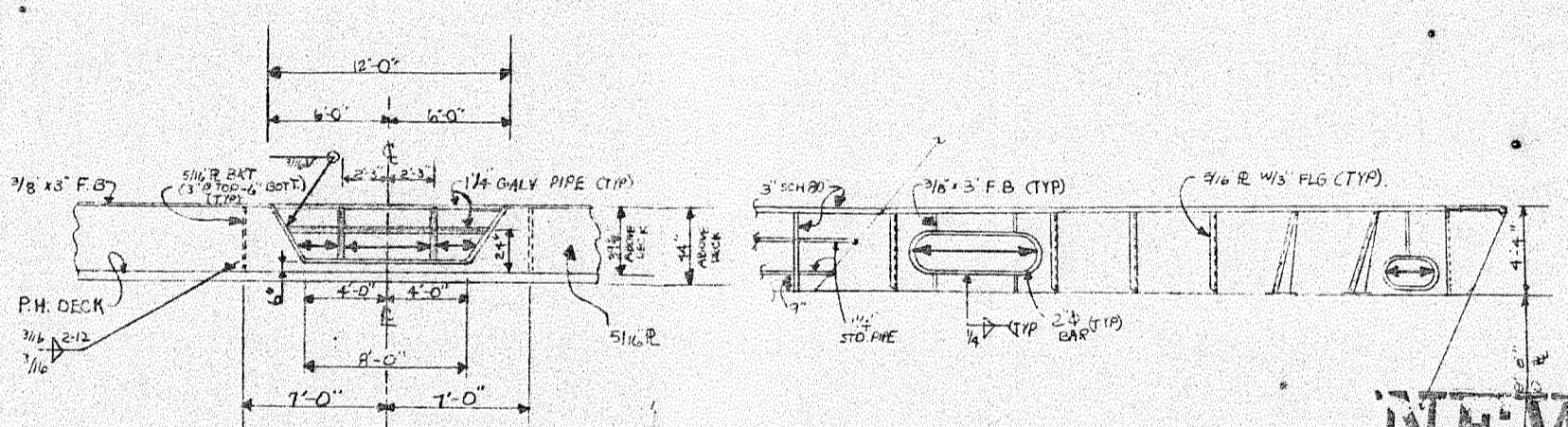
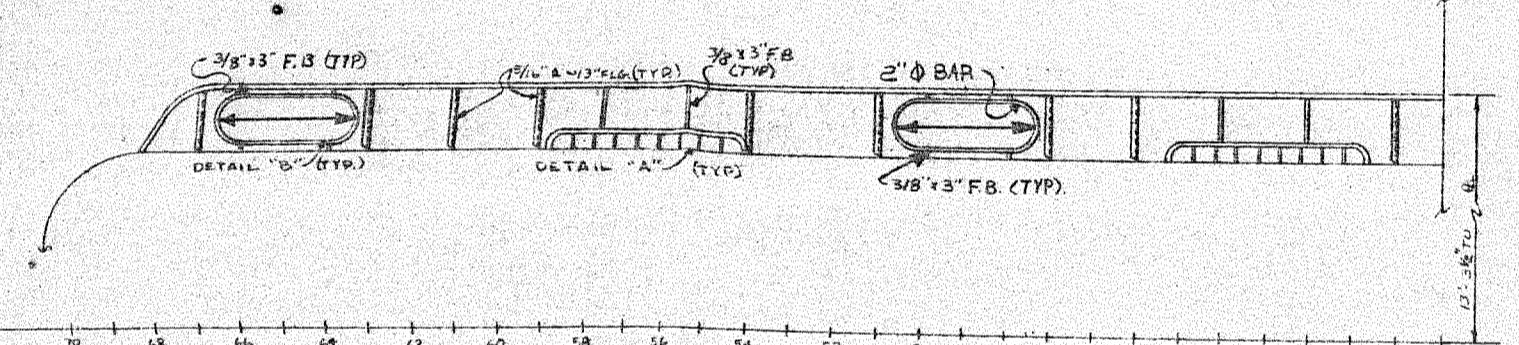
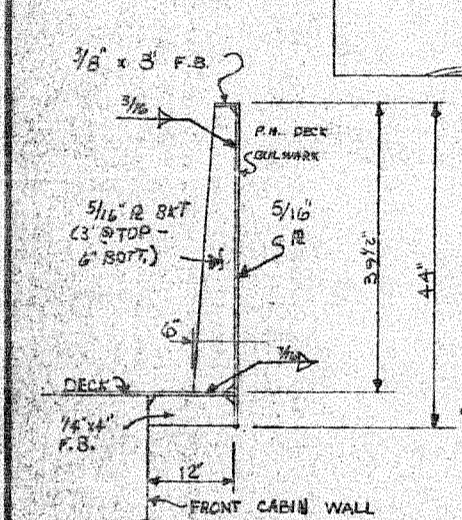


REV.	DATE	DESCRIPTION	BY	DATE	APPROV.

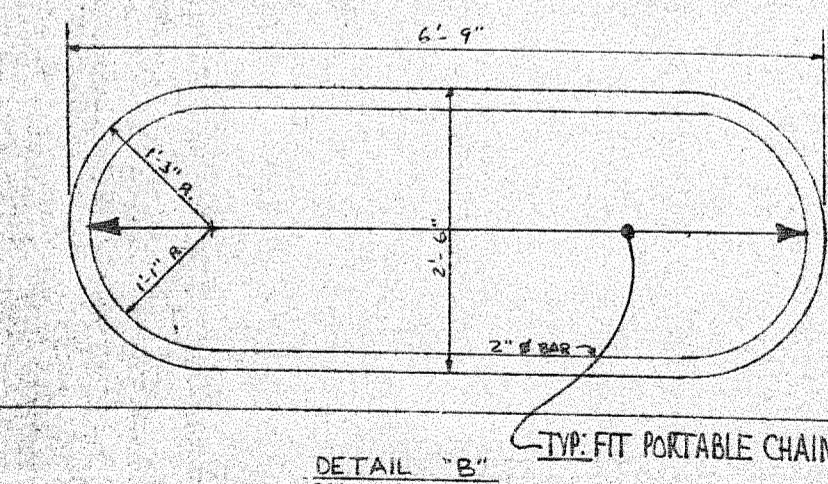
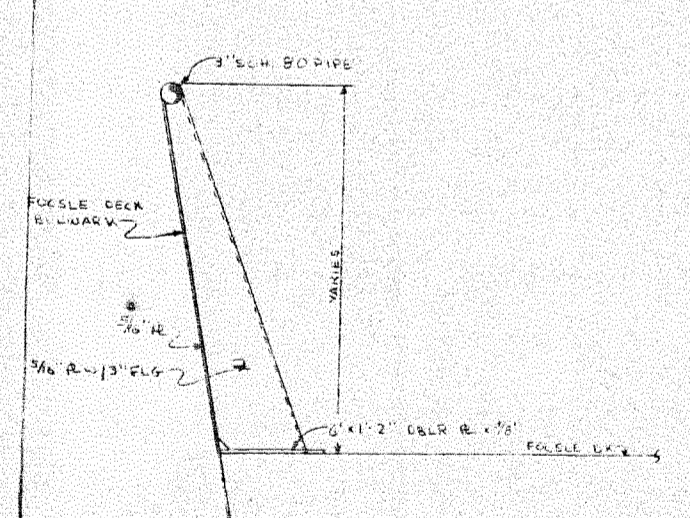
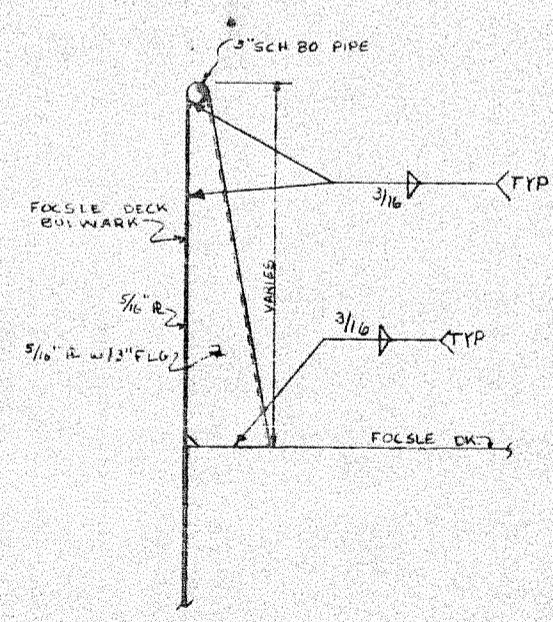
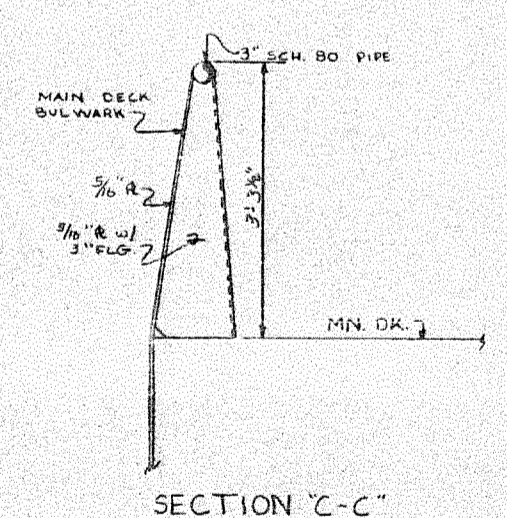
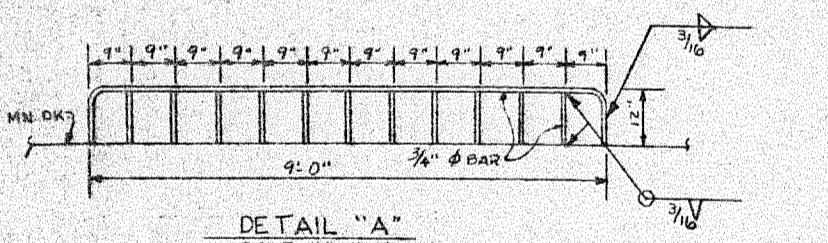


PILOTHOUSE DECK BULWARK  
SCALE: 3/16" = 1'-0"

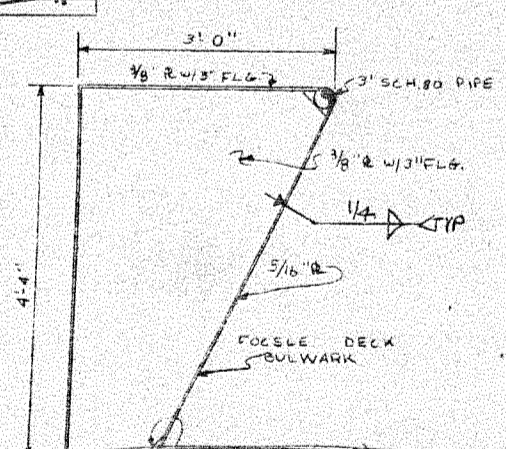


**NEW YORK**

APPROVED  
31 AUG 1981  
*P. J. [Signature]*



FILE COPY	
5	RECEIVED
1	FILE (NEW YORK)
1	FILE (NEW ORLEANS)
1	ABS NEW ORLEANS
0	USCG
	INITIALS



MISS. MARINE TOWBOAT CORP. HULL # 90

**DESIGN ASSOCIATES, INC.**  
NAVAL ARCHITECTS MARINE ENGINEERS  
NEW ORLEANS, LA.

TIDEWATER MARINE SERVICE

143' x 36' x 10' SEISMIC VESSEL

**BULWARK DETAILS**

Drawn: M.S.T.	Date: 7-21-81	Checked: A.L.S.
Traced:	Date:	Checked:
Approved: *	Date:	Seal: [Signature]

Sheet 1 OF 1 Drawing No. C-2042-46 Revision Mark